

XP line
small size, great power



XP72 dairy farm control

Main feature

The main feature of the XP72 is the color display screen (3.5") with 320x240 dots resolution with led backlighting. XP72 is made in DIN 96x96 format and the module dimensions are 96x96mm.



The user interface is easy and friendly. The easy touch screen system gives both the typical "easy to use" approach of a touch screen system and the strength and mechanical protection of a polycarbonate IP54 keyboard.

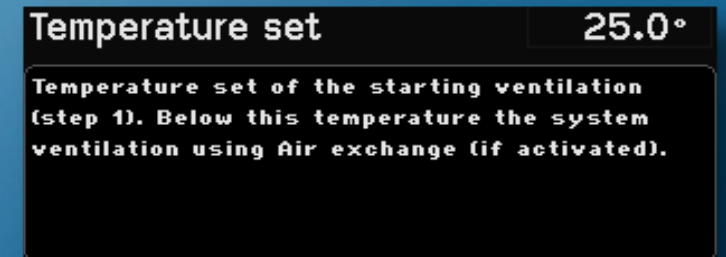
At every screen the function keys display a different graphic making the program very user friendly.



The user can select the display language: all the wordings, acronyms and "help" texts for programming assistance will be displayed in the chosen language.



Each programming step has its own help screen so the program has a "built in" instruction manual.



XP72 controls both the ventilation system and the sprinklers system of a dairy farm in an independent way



Ventilation is controlled by 0-10V output when brushless or asynchronous motors are operated by inverter; whereas the cooling control is performed by automatic timer of the water sprinklers (proportional to the temperature deviation), up to 6 water valve.

XP72 can work by 1 or 2 temperature probes (in installations with 2 water lines) and can be connected to a %RH probe. This allows XP72 to work by THI detection (temperature-humidity index) and also by wind meter control for protection from gusts of wind.

XP72 separately controls both the light periods commands and the off timings of the system.

The following daily data are recorded in the archive:

- min-max-average temperature
- water valves working time

Inputs and outputs



Other available connections

- **USB plug**
XP72 has a USB plug on the back.
- **XNET**
Network connection card (optional) for XP72 processor ([see remote supervision](#)).

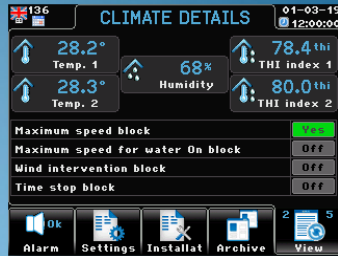
Sample screenshots



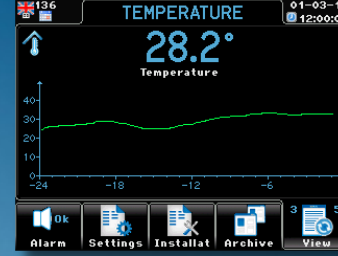
Viewing screens



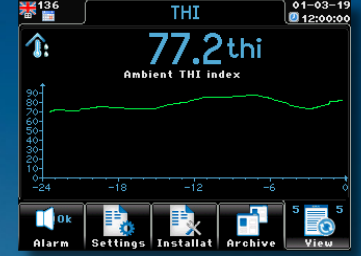
Viewing operating condition



Viewing operating condition



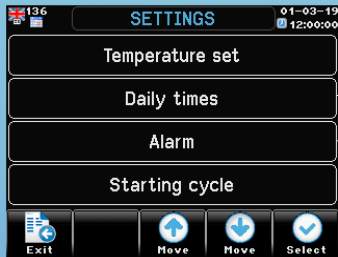
Viewing temperature chart



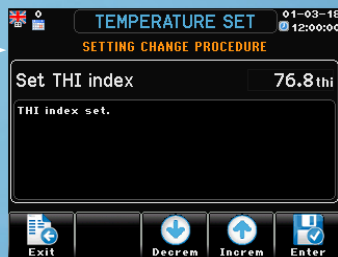
Viewing THI chart



Settings screens



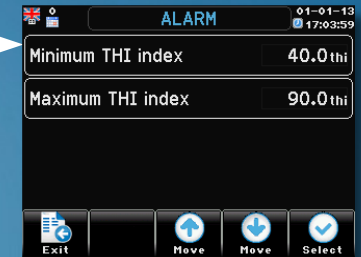
Settings selection



THI index setting



Time periods setting



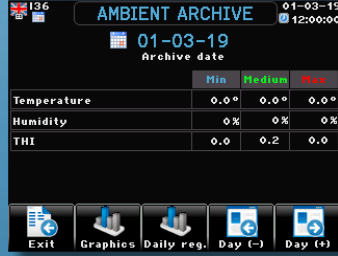
Alarm setting



Archive screen



Archives to display selection



Ambient archive

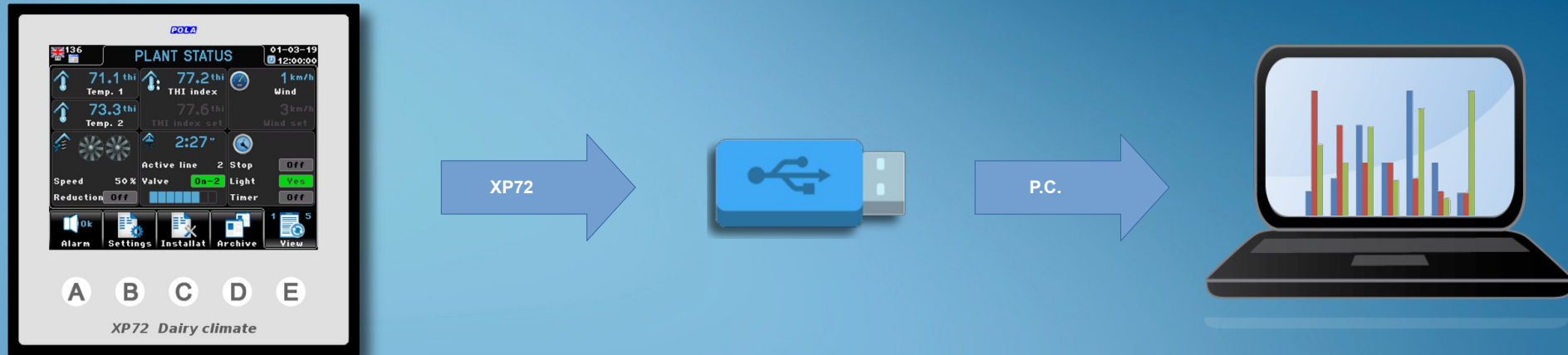


Cycle THI chart



Total cycle archive

Data transfer



The communication with the outside world is performed by USB key.

→ **Export archives**

XP72 save in the USB memory a file containing all the day by day recorded data of the cycle.

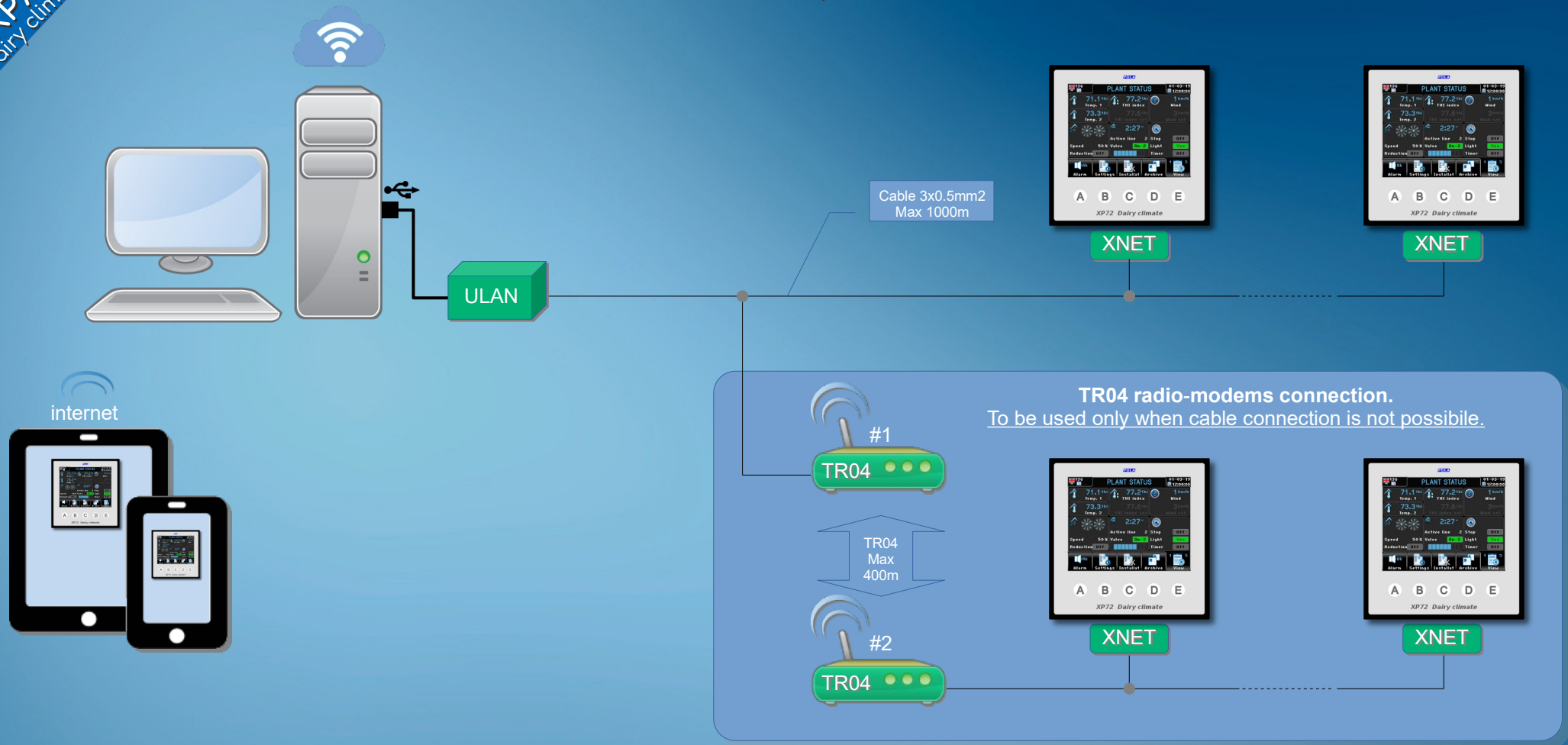
Connecting the USB key to a PC and by using the XP72 Dialogue software you can browse the recorded data in grid or graph formats.

→ **Importing / saving the setting**

You can save a file with all back-up infos on a USB file.

Saved settings can be uploaded on XP72 anytime by a user friendly procedure.

Remote supervision



Remote supervision of XP72 processors grants the full management of system by PC.

The XP72 Net Pro supervision software enables the full remote control of network connected processors. ULAN peripheral is connected to PC through a USB connection. XP72 – ULAN connection is done by a simple 3 wires cable. In all cases where ULAN cannot be cabled to XP72 we can supply TR04 radio-modems with a reach of 400 mt.

Components for creating a supervision system:

- ULAN: Network server Pc (with USB connection)
- XNET: Network adapter card (one for each XP72)
- TR04: Radio-modem 485 (optional, to be used only when cable connection is not possible. they need at least 2)

Available options

<i>Model</i>	<i>Description</i>
XP72	Dairy farm control (DIN96 panel mounting)
----- <i>Options</i> -----	
SX	Temperature probe (1 or 2 sensors according to the number of lines to be controlled)
WX	Wind meter rotating sensor
RHR	0...100% humidity probe
HA20s	Power pack for RHR humidity probe
HMVU	0-10V ventilation control manualizer
HMVU/W	0-10V ventilation control manualizer (with IP54 box for wall mounting + gasket + transparent cover)
HDY6	Relays extension slot
W01	IP54 box for wall mounting + gasket + transparent cover
USBP	USB IP65 external plug (to be mounted externally, for access to the USB without the need to access the back of the XP72)
XNET	Network nodal point
ULAN	Network server Pc (with USB connection)
TR04	Radio-modem 485 (IP55 junction box with power supply 230/12v)

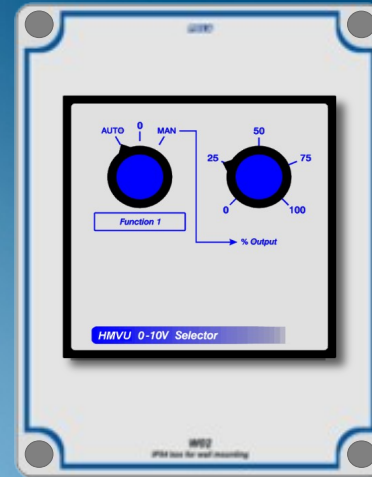


Available options



XP72

W01



HMVU/W



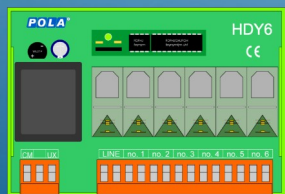
SX



RHR



WX



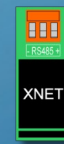
HDY6



HA20s



ULAN



XNET



USBP



TR04

POLA

www.pola.it

40th

40 YEARS OF INNOVATION